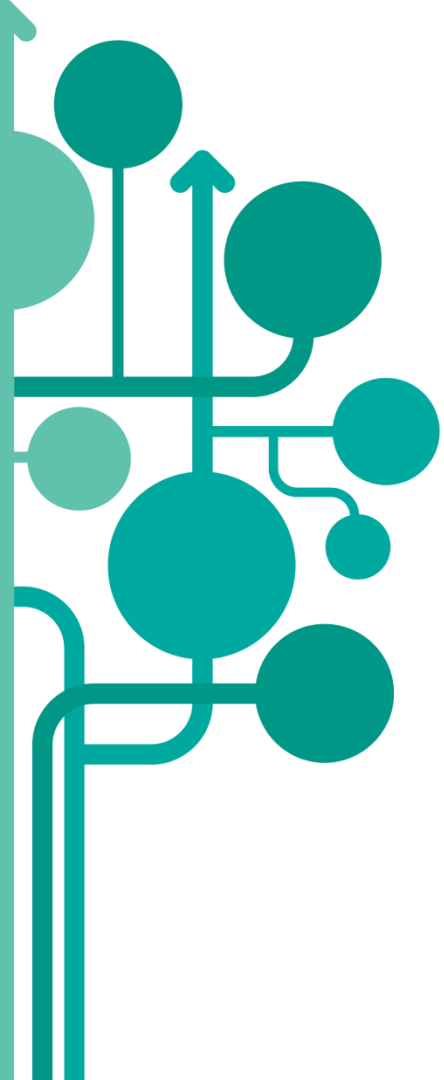




# EPALE as a powerful sharing and collaboration tool

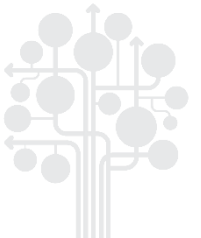
Marica Vukomanović, NSS Serbia



# Introductions

# Find someone who...

1. ...has already been in Warsaw. (and willing to share some sightseeing tips 😊)
2. ...has a pet. (find out which animal)
3. ...has published more than 10 posts on EPALE.
4. ...has started/joined/actively used a community of practice on EPALE.
5. ...has established some kind of cooperation with the use of EPALE.





- What are the benefits of having a European platform for adult learning?
- How has your professional life been supported?

- Have you found a European perspective on adult learning practice helpful?
- Are there any concrete examples you can share?

- What do practitioners/teachers need in order to further engage in an international dialogue and exchange good practice with their peers?
- How can EPALE facilitate this exchange?
- Which features on EPALE help to foster this exchange and how can they be improved?



**Thank you!**