

LEARNER'S SUPPORT & LEARNING ENVIRONMENTS AT COMPALL



ERASMUS+ Strategic partnership: Comparative Studies
in Adult Education & Lifelong Learning

Stefanie Kröner, M.A., JMU Würzburg
EPALE conference, 7 December 2017, Budapest



PARTNERS OF THE JOINT MODULE

Indian-German-Partnership:

Adult and Lifelong Learning:
European and Indian Insights



University of Delhi

A New Passage to India



Associated Partners

Joint Module for Master's and doctoral students
in comparative studies in adult and continuing education

ERASMUS+ Strategic Partnership



AARHUS
UNIVERSITY



UNIVERSITÀ
DEGLI STUDI
FIRENZE



HELMUT SCHMIDT
UNIVERSITÄT

Universität der Bundeswehr Hamburg



U LISBOA

UNIVERSIDADE
DE LISBOA

ie

Instituto de Educação



Universidade do Minho



PH Ludwigsburg
University of Education



PARTICIPATION

around 90 participants and
15 lecturers meet each year

Students in Adult Education and Lifelong Learning

Students with specialisation in AE and LLL

can participate in the joint module (exchange student status)

→ online-preparation before the Winter school

→ with two-week intensive phase in February in Würzburg/Germany

Students from (associated) partner universities

will additionally be prepared for the by their home university

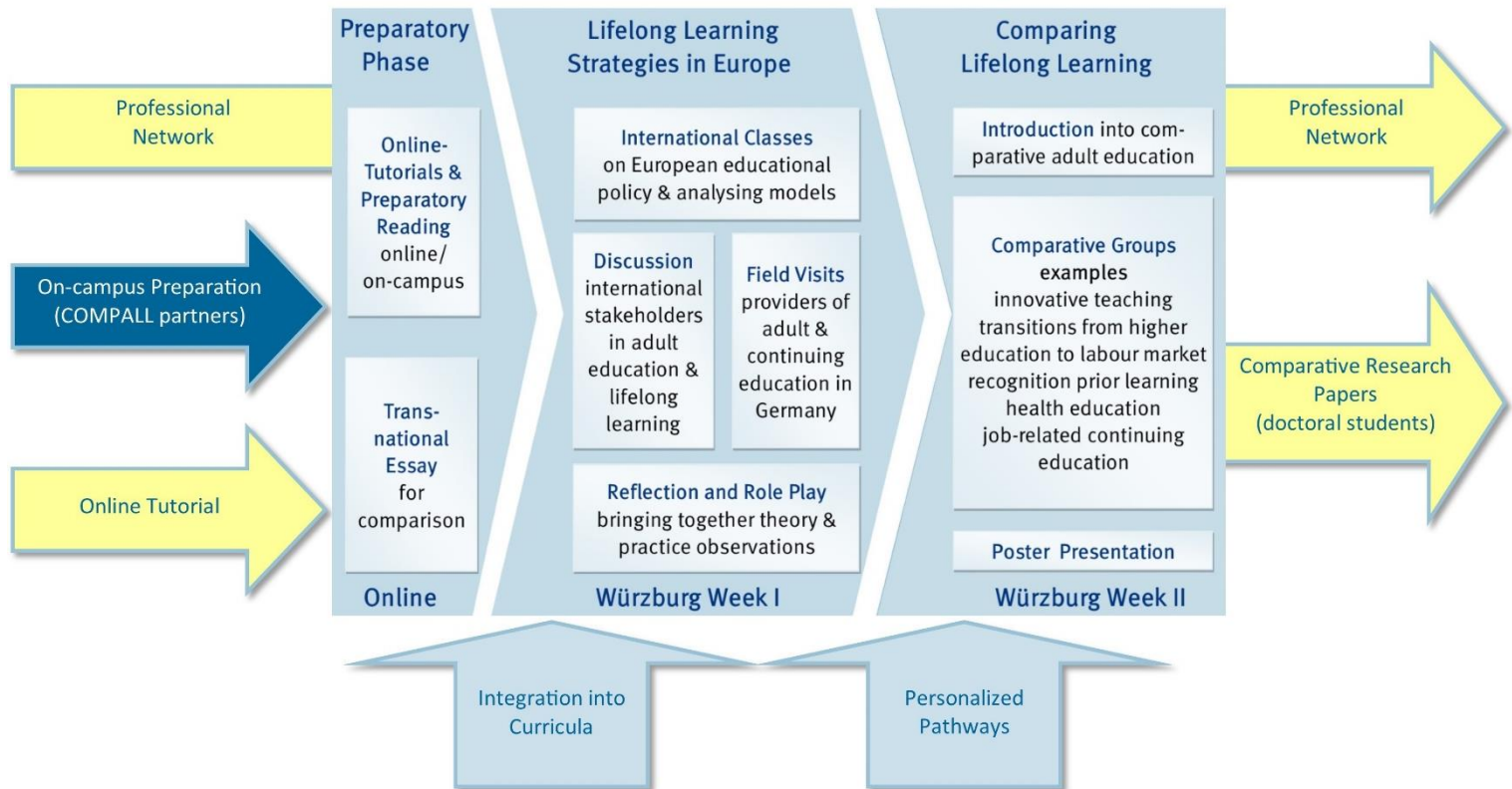
will meet their professor in the joint module as lecturers

ERASMUS+ Strategic Partners

are developing the joint module, didactical context and learning material

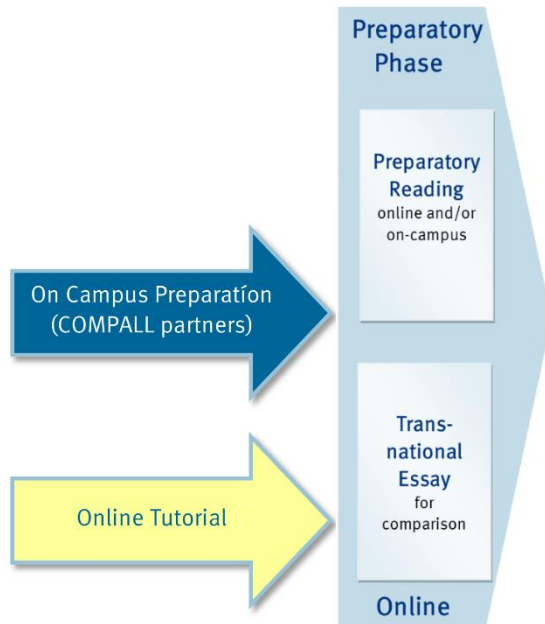


STRUCTURE





PREPATORY PHASE



PREPATORY PHASE



Online Preparation

- Introduction to the Joint Module
- International Networks in AE & LLL
- European Policies in AE & LLL
- European Policies Strategies
- Introduction into Comparative Adult Education
- Examples of Comparison
- Writing of the Transnational Essay

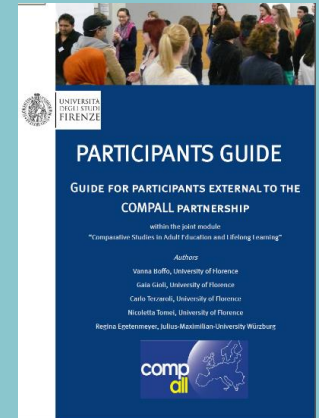
Preparation of a Transnational Essay

Online-Tutorials (open access)

https://www.hw.uni-wuerzburg.de/compall/winter_schools/online_preparation/

Participant Guide

incl. information on transnational essay



WueCampus

- International discussion on selected online-tutorials
- moodle-plattform with guidance by moderators

<https://wuecampus2.uni-wuerzburg.de/>

ONLINE-TUTORIALS

URL: <http://www.hw.uni-wuerzburg.de/compall>



Julius-Maximilians-UNIVERSITÄT WÜRZBURG

Intern

NEWS PARTNERS JOINT MODULE WINTER SCHOOLS PUBLIC EVENTS COMPARATIVE ANALYSIS INFORMATION TOOL

COMPALL

COMPALL / WINTER SCHOOLS / ONLINE PREPARATION

- News
- Partners
- Joint Module
- Winter Schools
- Information Material
- Online Preparation**
- Public Events
- Comparative Analysis
- Information Tool

Online Preparation

Below seven online tutorials are provided, which should help to prepare for the first week of the Winter School. All seven online tutorials are organized in a **self-directed learning mode** and follow a different structure. Please work step by step (**from left to right**) on each tutorial.

The online tutorials will be accessible by **mid of September 2017**.

I. Introduction to the Joint Module



Information Video



Please read the participants guide [↓](#)



Authors: Prof. Vanna Boffo, Dr. Gaia Gioli, Carlo Terzaroli, Nicoletta Tomei - University of Florence

II. International Networks in Adult Education and Lifelong Learning



Introduction Video

Please read the following text afterwards:

- Balázs Németh (not yet published): Critical Overview of the Roles of International Organisations in the Development of Adult and Lifelong Education.

Reflection Video



Join the Online Discussions:

- 27th November 2017, 10 am
- 29th November 2017, 1 pm

Author: Prof. Balázs Németh - University of Pécs

III. European Policies in Adult and Lifelong Learning



CGW 1: Time in Adult Learning and Education - Temporal phenomenon as resource and boundary

Helmut-Schmidt-University Hamburg, Germany (Prof. Sabine Schmidt-Lauff)

Learning always involves making and taking time. To understand the influence of time it encompasses more than just the single chronological time-related attributes (hours, minutes, time tables, schedules etc.). There is a great diversity of temporal elements as they exist in pedagogy e.g. time sequences during the (lifelong) learning process, temporal dislimitations in adulthood (work, family, recreation etc.), the didactical approach to synchronize learning processes etc. For instances, an inclusive educational model would promote lifelong learning within a temporal sensitivity for modern times. By questioning the effective 'real times' for learning (OECD; AES) one can find that time constraints are the main obstacles preventing adults from learning - no difference in which country you live. But beside, there are differences inbetween the legal national regulations concerning time (e.g. paid education leave).

Comparative research question:

How are the macro level (legislation/laws) and the micro level (participation/non-participation) time-perspectives in adult education interrelated to each other?

Context of comparison:

The contexts of comparison of the macro-level are laws and legal regulations: Especially the international 'paid educational leave' regulation relates to national ratifications (educational leaves) and to regional laws too (often with concrete instruments; in Germany for example 'learning vouchers'). The contexts of comparison at the micro-level can be the interdependency of participation in vocational training within working-learning-accounts in companies. Or the relation between a.) learning hours in non-vocational versus vocational training or b.) formal and non-formal learning. The context will be interdependent to the available data on this issue, e.g. national context in the OECD-data.

Categories of comparison:

- Legislative background: What legislative background concerning time for adult education exists in your country? (*Describe*)
- Ratification of ILO Paid Educational Leave Convention: Has your country given their ratification by convention to the ILO Paid Educational Leave Convention, 1974 (No. 140)?
- Time for participation in adult education: Find some data about your country and report: How much time (e.g. hours per year) do adults spend in educational activities? Is there a difference between formal and non-formal education? Is there a difference in learning time inbetween vocational training and general education?
- Temporal barriers of participation in adult education: What is in the OECD 'Education at a Glance' (2014) reported about the lack of time resp. temporal barriers to participation in adult learning activities (between work and family; inconvenient time offer; lack of support and unexpected things)?

Not available unless: You belong to **CGW 1**

 Forum & submission of the transnational essay

Not available unless: You belong to **CGW 1**

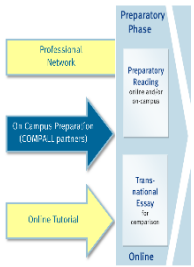
 Literature

Not available unless: You belong to **CGW 1**



INFORMATION TOOL

URL: <http://www.hw.uni-wuerzburg.de/compall>



Julius-Maximilians-**UNIVERSITÄT WÜRZBURG** Intern

[NEWS](#) [PARTNERS](#) [JOINT MODULE](#) [WINTER SCHOOLS](#) [PUBLIC EVENTS](#) [COMPARATIVE ANALYSIS](#) [INFORMATION TOOL](#)

- COMPALL**
- ★ / COMPALL / INFORMATION TOOL
- News
 - Partners
 - Joint Module
 - Winter Schools >
 - Public Events >
 - Comparative Analysis >
 - Information Tool** ▾
 - Country Reports in Adult Education
 - Dataset: Comparative Research in ALE
 - International Study Offers in ALE
 - Online Networking Opportunities
 - Preparation Material for Winter School

Information Tool on Internationalisation in Adult Education

This information tool will be build up during the ERASMUS+ Project Comparative Studies in Adult and Lifelong Learning. It will provide information for students and (young) researchers in adult education on internationalisation possibilities and comparative resources in adult education and lifelong learning.



Foto: Regina Egetenmeyer, Würzburg

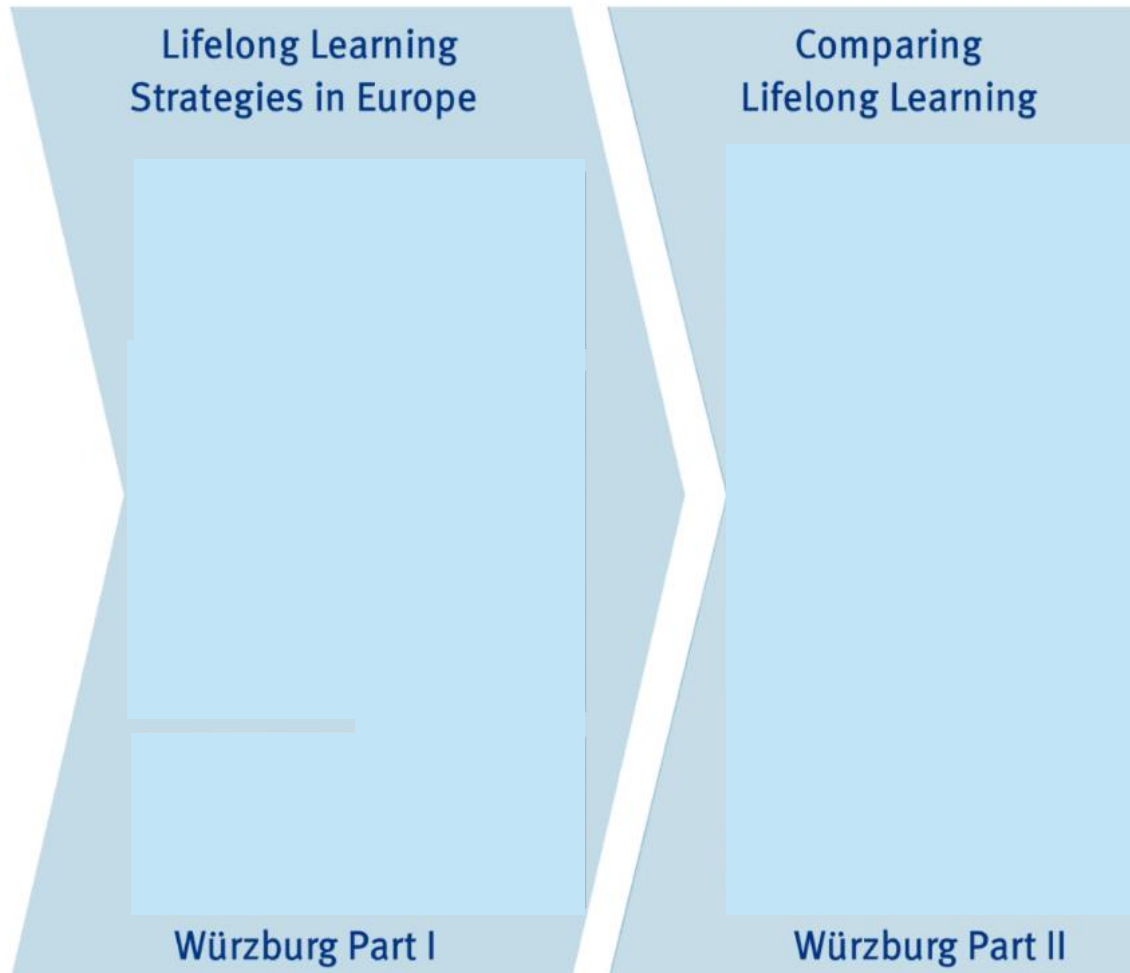
[Country Reports in Adult Education](#) [Dataset: Comparative Research in ALE](#) [International Study Offers in ALE](#)

[Online Networking Opportunities](#) [Preparation Material for Winter School](#)



TWO-WEEK WINTER SCHOOL

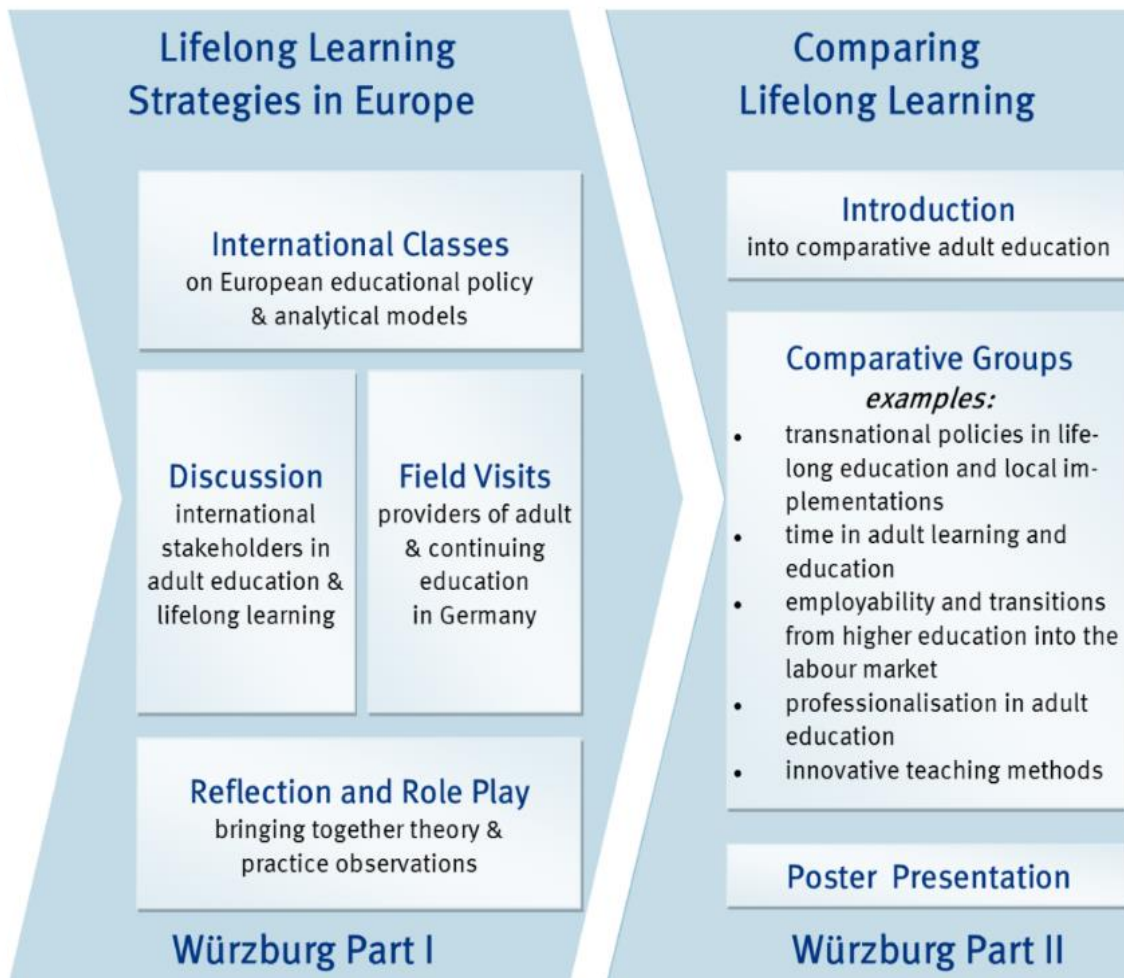
Lifelong Learning Strategies in Europe	Comparing Lifelong Learning
International Classes or Exchange categories in individual mode	Introduction
Discussion: international mobility and lifelong learning	Field Visits: presentation of local mobility in Germany
Reflection and Role-Play of global mobility trends and perspectives	Comparative Groups workshop: <ul style="list-style-type: none">• introduction, objectives of the workshop• presentation of the workshop• introduction to the workshop• introduction to the workshop• introduction to the workshop
Würzburg Part I	Poster Presentation Würzburg Part II





TWO-WEEK WINTER SCHOOL

Lifelong Learning Strategies in Europe		Comparing Lifelong Learning	
International Classes on European educational policy & analytical models		Introduction into comparative adult education	
Discussion international stakeholders in adult education & lifelong learning	Field Visits providers of adult education & continuing education in Germany	Comparative Groups examples: <ul style="list-style-type: none"> transnational policies in life-long education time in adult learning and education employability and transitions from higher education into the labour market professionalisation in adult education innovative teaching methods 	
Reflection and Role Play bringing together theory & practice observations		Poster Presentation	
Würzburg Part I		Würzburg Part II	






PROFESSIONAL NETWORK

Professional
Network

Professional
Network



PROFESSIONAL NETWORK



Professional
Network

Public LinkedIn Network:

Professional Network in Adult and Lifelong Learning

- open to join for all interested people in AE and LLL
- dissemination platform for professionalisation/ learning possibilities for people working in the field of AE and LLL
- contacting platform to reach international experts in the field of AE and LLL

Confidential LinkedIn Network:

Winter School 2016, 2017, 2018...

- contacting network only for enrolled participants of the respected Winter School sessions





COMPARATIVE RESERACH PAPERS

Comparative Research Papers
(doctoral students)

Comparative Research Papers
(doctoral students)

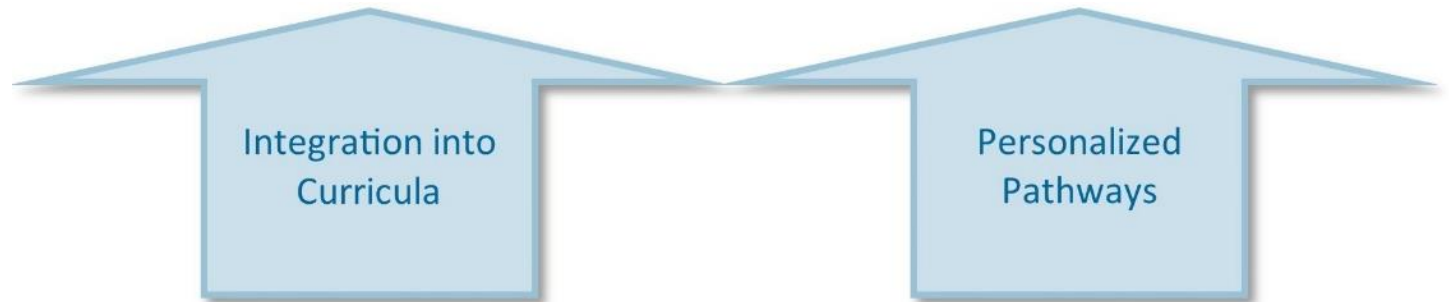
Exclusive Offer for Doctoral Students

- possibility of writing a comparative research paper in an international group
- supervision by an international expert (moderator/comoderator of the comparative groups)
- paper will follow an international
- peer-review process
- publication in an edited volume





CURRICULUM INTEGRATION





CURRICULUM INTEGRATION



Integration into the Curriculum

- the joint module will be recognized in the curriculum of Master's and doctoral students in all partner universities
 - associated partners are recognizing the joint module
 - COMPALL is developing therefore different recognition-models
- *Student may be asked to contact the contact persons of their universities for recognition*

Personalized Pathways

- each partner universities adapts the preparation and follow up according to their local curricula and students
- *adaption to the competences of students and structure of local curricula*



FURTHER INFORMATION: COMPALL-HOMEPAGE

URL: <http://www.hw.uni-wuerzburg.de/compall>



- NEWS
- PARTNERS
- JOINT MODULE
- WINTER SCHOOLS
- PUBLIC EVENTS
- COMPARATIVE ANALYSIS
- INFORMATION TOOL



COMPALL

› Comparative Studies in Adult Education and Lifelong Learning

The Strategic Partnership COMPALL is developing a **joint module** in „Comparative Studies in Adult Education and Lifelong Learning“, which will be offered in study programmes related to adult education and lifelong learning.

The joint module includes a **preparatory phase**, a **two-week intensive phase** at Campus Würzburg, Germany and a **publication possibility** for doctoral students and colleagues. Furthermore, COMPALL is developing an **online network for young graduates and researchers** in adult and lifelong learning.



› Winter School

5th International Winter School "Comparative Studies in Adult Education & Lifelong Learning" 5-16 February 2018 in Würzburg, Germany



COMPALL networks

› Professional Network for Adult Education and Lifelong Learning



› WueCampus Student Login

LOGIN

Anmelden

Kennwort

Anmeldeinformationen merken

Login

› WueTeams Partner Login

wue@teams

Accountname (E-Mail-Adresse)

Benutzer-ID

Passwort

Suchen



FURTHER INFORMATION: FLYER FOR UNIVERSITIES & STUDENTS

Comparative studies
in
adult education
and
lifelong learning

COMPALL: 2015 - 2018

ERASMUS+ Strategic partnership



Comparative studies
in
adult education
and
lifelong learning

COMPALL: 2015 - 2018

Transnational Study Offer
for doctoral and master's students
in adult and lifelong learning





FURTHER INFORMATION: WINTER SCHOOL HOMEPAGE

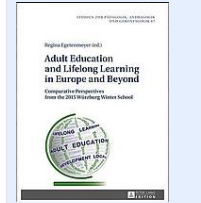


International Winter School: Comparative Studies in Adult Education and Lifelong Learning

- Professur für Erwachsenenbildung / Weiterbildung
- International Winter School: Comparative Studies in Adult Education and Lifelong Learning
- Partners
- Application & scholarships
- Registration & participation contribution
- Accommodation & certificate
- Programme
- Archive
- COMPALL Information Tool
- Venue & contact
- Imprint + Privacy Policy



Würzburg Winter School 2015 Publication



The publication (Peter Lang Publisher) is funded by the Federal Ministry of Education and Research (Project number: 01JG1510).

4th International Winter School Comparative Studies in Adult Education and Lifelong Learning

6th-17th February 2017 in Würzburg, Germany

The international Winter School 'Comparative Studies on Adult Education and Lifelong Learning' is dedicated to analysing and comparing international and European strategies in lifelong learning. Based on social policy models, lifelong learning strategies in Europe, including selected European countries, will be subjected to a critical analysis. Furthermore, subtopics of lifelong learning have been chosen (e.g. participation in adult education in Europe, training the adult learning trainers, quality in adult education) for an indepth comparison and analysis of the situation in various European countries.

During the first part of the Winter School, theories and approaches will be used for analysing European and international lifelong learning strategies. The programme features direct interactions with key European stakeholders in lifelong learning. Furthermore, local providers in adult and continuing education in Würzburg will be visited. The interaction will lead to a critical analysis and to a comparison of lifelong learning strategies, as well as to a theory-practice reflection on international policies in lifelong learning.

During the second part, the Winter School focuses on the comparison of selected subtopics of lifelong learning in selected countries: How does the training of trainers vary in different countries? How does participation in adult education differ in various European countries? How do quality systems vary in different countries? Which differences and similarities do we find in the policies towards lifelong learning in different countries? What conclusions can be drawn out of these differences and similarities? Comparisons within the Winter School focus questions of adult education and lifelong learning. Questions within adult education refer to learning processes of adults and the integration of them into diverse (educational) contexts. In international contexts – especially within international organisations – one can find the term lifelong learning which is frequently associated with adult learning. The Winter School is looking on questions and discourses of lifelong learning from the perspective of adult education.

The Winter School is geared towards master and doctoral students from Europe and beyond. Mainly focused are students who are enrolled in study programmes close to adult education and lifelong learning. We welcome an interdisciplinary approach towards these topics.

Financial Support

This project is funded with support from the German Academic Exchange Service (DAAD) (project number 57248567) and by the Federal Foreign Office, the German Academic Exchange Service (DAAD) within the Programme "A New Passage to -theroepan Commission within the ERASMUS+ Strategic Partnerships (project number: 2015-1-DE01-KA203-002203)" and the Julius-Maximilians-University Würzburg within the Human Dynamics Center (HDC) of the faculty of human sciences and the Programme "Globale Systeme und Interkulturelle Kompetenz" (GSIK). *This communication reflects the views only of the author, and the Commission cannot be held responsible for any use which may be made of the information contained therein.

Dieses Projekt wird durch den Deutschen Akademischen Austauschdienst (DAAD) aus Mitteln des Auswärtigen Amtes (Projekt 57248567), durch den Deutschen Akademischen Austauschdienst (DAAD) im Rahmen des Programms "A new passage to India", die Europäische Kommission im Rahmen von ERASMUS+ Strategische Partnerschaften (Projekt 2015-1-DE01-KA203-002203)" und die Julius-Maximilians Universität Würzburg durch das Human Dynamics Center (HDC) der Fakultät für Humanwissenschaften sowie



Winter School Booklet



Winter School Poster

Financial Support

A New Passage to India.


SPONSORED BY THE

Federal Ministry of Education and Research

URL: www.lifelonglearning.uni-wuerzburg.de



FURTHER INFORMATION: WINTER SCHOOL FLYER & BOOKLET



**Julius-Maximilians-
UNIVERSITÄT
WÜRZBURG**

Professorship for Adult and Continuing Education
Faculty of Human Sciences

INTERNATIONAL WINTER SCHOOL
FOR MASTER- AND DOCTORAL STUDENTS

COMPARATIVE STUDIES IN ADULT EDUCATION & LIFELONG LEARNING

IN WÜRZBURG/BAVARIA, GERMANY

5.-16.2.2018

ABOUT THE PROGRAMME

- Basic concepts: politics, policies, strategies for adult & lifelong learning
- Levels of analysis: mega, meso, macro and micro
- European policy in adult and lifelong learning
- Field visits to local institutions of adult & continuing education
- Comparative research in adult education & lifelong learning

COMPARATIVE GROUP WORK ON

- Employability & transitions of young adults
- Innovative teaching methods for adult and lifelong learning
- Time in adult learning and education
- Adult education and lifelong learning and the sustainable development goals
- Students' voice as teaching and learning methods
- Health education for adults
- Implementation of guidelines for the accreditation of prior learning
- National/regional adult education and lifelong learning policies
- Job-related continuing education and training
- Soft skills for adult educators' professionalisation

CULTURAL PROGRAMME

**APPLICATION DEADLINE: 30.09.2017
FOR STUDENTS FROM COMPALL-PARTNER-
UNIVERSITIES: 31.10.2017
www.lifelonglearning.uni-wuerzburg.de**

