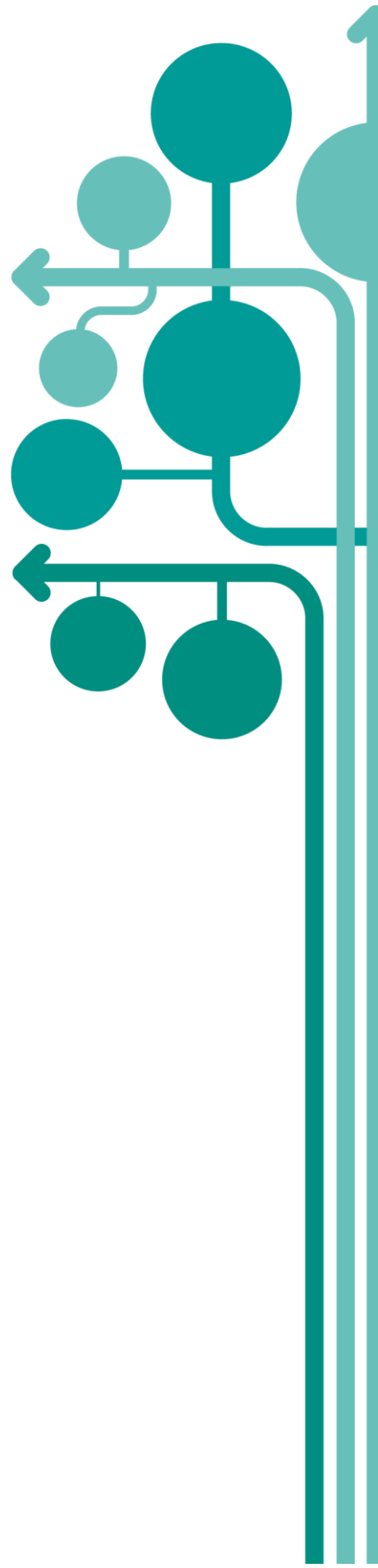


EPALE Photo Competition

Privacy Statement & Acceptance of
Competition Rules

EPALE CSS and INTRASOFT International
S.A.



Privacy Statement

The Education, Audiovisual and Culture Executive Agency ("EACEA") is committed to preserving your privacy. All personal data are dealt with in accordance with Regulation (EU) No 2018/1725 on the protection of personal data by the Union institutions, bodies, offices and agencies¹ ("the data protection regulation").

The following Privacy statement outlines the policies by which the EACEA collects, manages and uses the personal data of the concerned individuals within the EPALE Photo Competition 2019.

1. Who is responsible for processing your personal data (data controller)?

The controller is the Education Audiovisual and Culture Executive Agency, Avenue du Bourget 1, BOUR, BE-1140 Brussels

The person designated as being in charge of the processing operation is the Head of Unit A5 of EACEA Postal address: Education Audiovisual and Culture Executive Agency, Avenue du Bourget 1, BOUR, BE-1140 Brussels

Email: EACEA-EPLUS-EPALE@ec.europa.eu

2. Which personal data are processed?

Personal data that is collected by the Controller includes:

- the identification data of the person (name, address, email address) - mandatory
- preferred language - mandatory
- professional occupation- mandatory
- country- mandatory
- description of the imagery – mandatory

3. For which purpose do we process your data?

The aim of the processing is to assess the legitimacy of the participating individual in the EPALE Photo Competition, in accordance with the rules of the competition. The data collected is necessary as it will ensure the Jury can validate the eligibility of all participants and their entries.

The Controller will have to further process/keep the personal data for one of the following purposes: for archiving purposes in the public interest and for statistical purposes.

¹ Regulation (EU) 2018/1725 of the European Parliament and of the Council of 23 October 2018 on the protection of natural persons with regard to the processing of personal data by the Union institutions, bodies, offices and agencies and on the free movement of such data, and repealing Regulation (EC) No 45/2001 and Decision No 1247/2002/EC Text with EEA relevance, *OJ L 295, 21.11.2018, p. 39.*

4. Where the data is collected from?

The data will be collected from social media platforms that an individual has submitted their entry through. Participants will be asked to provide their details with their submission and further details if they are selected as one of the winning entries. This is in accordance with the rules of the competition.

5. Who has access to your personal data and to whom is it disclosed?

The data Controller has access to the personal information that a data subject has provided and how it is processed.

Example:

Access to your personal data may be given on a need-to know basis to the following recipients:

- The Director of EACEA
- EACEA's service provider the EPALE CSS, which is a partnership between Ecorys Europe and Intrasoft S.A.
- European Commission, DG EAC, DG EMPL

In case of control or dispute the bodies charged with a monitoring or inspection task in application of Union law (e.g. Internal Audit Service, European Commission, OLAF, EU Courts etc.).

6. How long do we keep your personal data?

Data relating to EPALE Photo Competition will be kept for no more than 6 months after the closure of the competition. This period of data storage is necessary as part of the current EPALE work plan which ceases 31 December 2019. However, we may keep information identifying you for a longer period for historical, statistical or scientific purposes with the appropriate safeguards in place.

7. What are your rights concerning your personal data and how can you exercise them?

Under the provisions of the data protection regulation, you have the right to:

- Request to access the personal data EACEA holds about you;
- Request a rectification of your personal data where necessary;
- Request the erasure of your personal data;
- Request the restriction of the processing of your personal data;
- Request to receive or to have your data transferred to another organization in commonly used machine readable standard format (data portability).

NB: Considering the competitive nature of the selection process, the right to rectify information can only apply to the factual data processed within the rules of the competition. The right to rectify these data can only be exercised up to the closing date for submission of entries. However, inaccurate identification factual data may be rectified at any time during and after the competition ceases.

In addition, as this processing of your personal data is based on your consent [Article 5(1)(d) or Article 10(2)(a) of the data protection regulation], please note that you can withdraw it at any time, and this

will have effect from the moment of your retraction. The processing based on your consent before its withdrawal will remain lawful.

8. Your right to have recourse in case of conflict on any personal data issue

In case of conflict on any personal data protection issue you can address yourself to the Controller at the above mentioned address and functional mailbox.

You can also contact the Data Protection Officer of EACEA at the following email address: eacea-data-protection@ec.europa.eu.

You may lodge a complaint with the European Data Protection Supervisor at any time: <http://www.edps.europa.eu>

9. On which legal basis are we processing your personal data?

The data subject has given consent to the processing of his or her personal data for one or more specific purposes.

Acceptance of Competition Rules

By entering the competition, the participants agree to be bound by the Competition Rules, including assurances on the copyright of entries. Failure to comply with these rules may result in disqualification. This campaign and the present rules are governed by Belgian law and under the jurisdiction of the Brussels Courts, as the legal headquarters of European Commission are located in Brussels, Belgium. If there are discrepancies between the translated versions of the rules and English version, the English version will prevail. In case of a controversial interpretation and/or application of the different versions, the English version will prevail.

About the #EPALEandMe competition

The European Commission's Education, Audiovisual and Culture Executive Agency and its representative the EPALÉ CSS which is a partnership between Ecorys Europe and Intrasoft S.A. invites you to participate in the #EPALEandMe contest, a photo competition about the positive contributions of EPALÉ to professionals working within the adult learning sector across Europe.

The topic of the competition is "How has EPALÉ supported you?" The 10 best pictures will be chosen by a jury and those participants will receive their prize – one of 10 Fujifilm Instax cameras.

All you need to do is take a picture showing how EPALÉ has made a positive contribution in your adult learning profession. You can use any of the varied themes on the EPALÉ website as inspiration! By participating in the contest, you agree to the following rules:

About the photograph's content

Your photographs should be a photo of how EPALÉ has made a positive contribution in your adult learning profession. You can submit a photograph in relation to any theme available on the EPALÉ website. Photos that are not relevant to the themes will not be considered.

Eligibility

The competition is open to people ages 18 and over (by 13th September 2019) living in any of [the participating countries in the EPALÉ community](#) and willing to express their views about the adult learning sector and associated issues. The Central Support Service, National Support Services and colleagues from partner agencies, organisations and ministries directly working on the EPALÉ project are prohibited from entering.

Entries

Entries must be your own original work. Up to three submissions per person are allowed but duplicated entries will be removed; all entries must be submitted via Facebook or Twitter using the official competition hashtag (#EPALEandMe) and tagging the @EPALÉ_EU Facebook or Twitter account and with privacy set to public. Entries that are offensive, defamatory, obscene, or that disclose unnecessary personal information will be rejected from the competition.

Closing date

Entries must be submitted by 13th September 2019 (midnight CEST).

Editing

Photos can be edited, and filters can be applied using tools built into the social network and/or smartphone app. Photos shot using various methods (i.e. long exposure, stacking) and camera built-in effects are accepted. However, extensive editing such as special effects, computer-generated images and other heavy modifications should be avoided.

Copyright

All entries must be an original work and the participant must either be the sole owner or the transferee of the copyright. By entering the competition, participants retain full copyright of their images. However, participants also agree to be bound by Facebook (<https://www.facebook.com/legal/terms>) legal terms and Twitter legal terms (<https://twitter.com/en/tos#intlTerms>). Participants also grant the European Commission the right to publish (online and offline) and exhibit uploaded photographs. Participants should retain the original digital file/negative of their entry as they may be asked to prove ownership of the work, as well as providing the promoter with the entry in the highest possible resolution.

Shortlisted candidates will be asked to supply supplementary information, including but not restricted to, consent from any individuals that appear in the entry and proof of ownership of the material submitted.

Entrants will be asked to send in their original picture (high resolution for printing), if they are selected as winners at a later stage. Winning entrants will also be contacted to complete the necessary permission forms to confirm copyright and to follow the Commission's guidelines on the use and publication of photos as of March 2019.

Moderation

All entries are checked to ensure that they comply with the competition rules before being accepted. Once they have been approved, they will be reviewed by the Jury.

Prizes

The 10 winners will each receive one Fujifilm Instax Camera and one pack of film shots. Prizes can under no circumstances be substituted or redeemed in cash. If you are among the 10 winners of the competition, you will be contacted directly on Facebook or Twitter by INTRASOFT International S.A. and will be asked to accept the terms and conditions of the competition to confirm you fulfil eligibility criteria.

Once your confirmation is given and reviewed, you will be asked to share your information (name, an address in Europe, email and contact number) so the prizes can be delivered to you. Failure to provide these details within 1 month of initial contact on social media will result in a forfeiture of the prize.

Selection of winners

Pictures will be reviewed by a jury who will select the winning entries (10 unique pictures in total).

The jury will be made up of from EACEA and the CSS. The jury will decide based on the relevance of the photos for the topic "How has EPALE supported you?" and the creativity and quality of the photos submitted.

Only the winners will be contacted. The winners will be asked to provide proof of identity. The organiser's decision regarding the selection of the winners is final and irrevocable.

Cheating

Please compete fairly and respect your fellow participants. Any participant reasonably suspected of cheating, will be disqualified from the competition and their entries rejected. No correspondence will be entered into on this matter.

Responsibility

Under no circumstances can the organisers be held liable for any accident, costs, direct or indirect damage which might occur as a result of participation in this contest. Similarly, the organisers cannot be held responsible for any theft, loss, delay or damage during the transmission of the prizes. Finally, the organisers can under no circumstances be held liable for the cancellation, postponement or modification of the competition due to unforeseen circumstances. In addition, the dates mentioned in the competition rules may vary due to organisational reasons or unforeseen circumstances.

Contact information

In case you wish to verify which personal data is stored on your behalf by the responsible controller, have it modified, corrected, or deleted, or if you have questions regarding the competition, or concerning any information processed in the context of this contest, feel free to contact us using the following contact information:

EPALE Helpdesk

Email: helpdesk@epale-support.eu Tel: +44 (0) 121 212 8934

